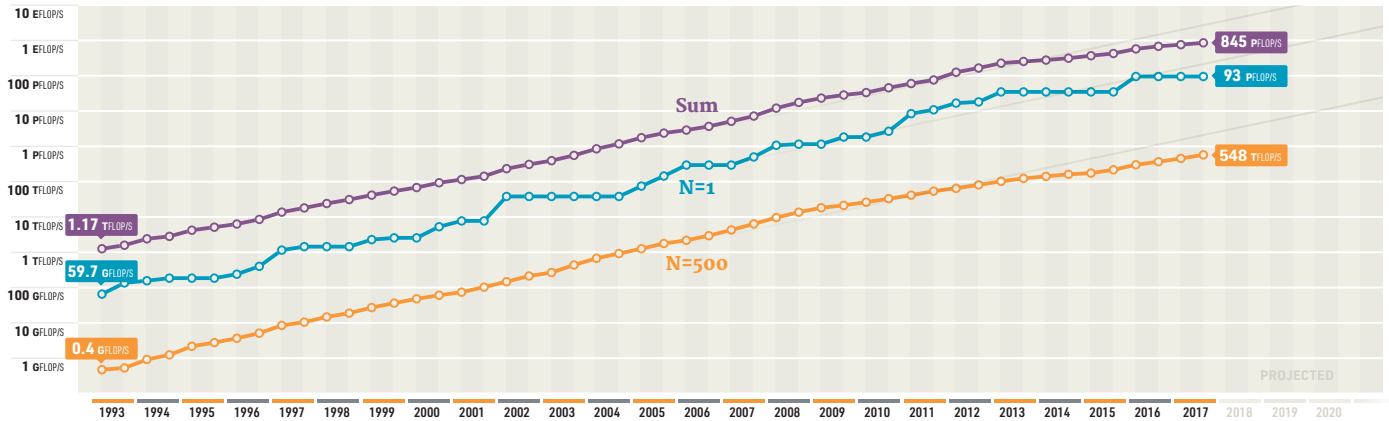


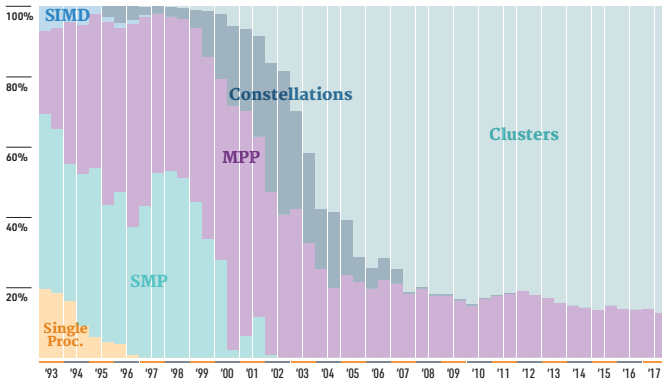


	NAME	SPECS	SITE	COUNTRY	CORES	R <sub>MAX</sub> PFLOP/S	POWER MW
1	Sunway TaihuLight	Shenwei SW26010 (260C 1.45 GHz) Custom interconnect	NSSC in Wuxi	China	10,649,600	93.0	15.4
2	Tianhe-2 (Milkyway-2)	Intel Ivy Bridge (12C 2.2 GHz) & Xeon Phi (57C 1.1 GHz), Custom interconnect	NSSC in Guangzhou	China	3,120,000	33.9	17.8
3	Piz Daint	Cray XC50, Xeon E5-2690v3 12C 2.6GHz, Aries interconnect, NVIDIA Tesla P100	CSCS	Switzerland	361,760	19.6	2.27
4	Gyokou	ZettaScaler-2.2 HPC system, Xeon D-1571 16C 1.3GHz, Infiniband EDR, PEZY-SC2 700Mhz	JAMSTEC	Japan	19,860,000	19.1	1.35
5	Titan	Cray XK7 Operon 6274 16C 2.2 GHz + Nvidia Kepler GPU Custom interconnect	DOE/SC/ORNL	USA	560,640	17.6	8.2

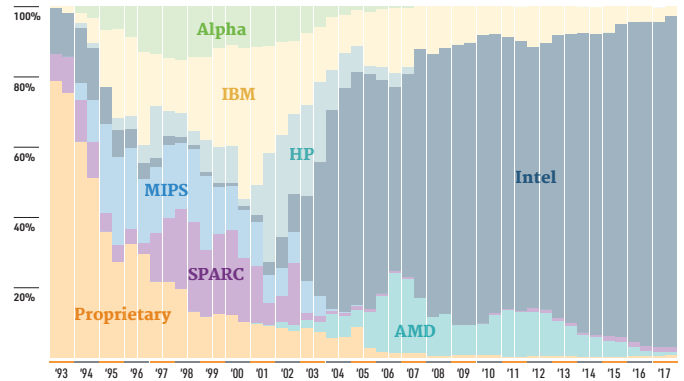
## PERFORMANCE DEVELOPMENT



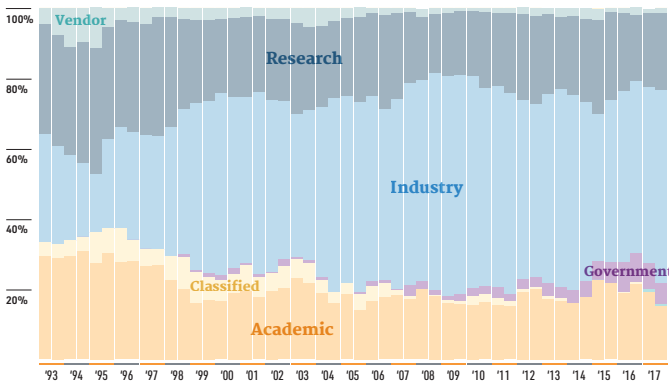
## ARCHITECTURES



## CHIP TECHNOLOGY



## INSTALLATION TYPE



## ACCELERATORS/CO-PROCESSORS

